



NEWSLETTER NOV./DEC. 04

NEWSLETTER OF WHEELING HISTORICAL SOCIETY



Message From The President

Dear Members and Friends:

Another month has gone by and soon it will be time for Thanksgiving and Lollipop Lane.

At our October meeting Shirley McConnell took us back in history and told us some interesting facts about Old Wheeling. It is always a pleasure when a member of our society can take us back in time and recall their personal memories of Wheeling. We are hoping to have her talk to us again.

At our November Meeting we will be discussing Lollipop Lane and the preparations that still are needed. Shirley Koeppen will be calling you to bake cookies or you can call her at 1-847-509-8368. We are also looking for volunteers to help set up Lollipop Lane and to help make up the cookie plates or help sell cookies. If you are interested in helping, give Lonnie or Frank at call at 1-847-459-1788.

In the event that you are not able to make our November meeting, have a Happy Thanksgiving, and Happy Holidays.

Elaine Simpson
President

Remember, we now have meetings all year around except December.

CURATOR'S REPORT

It has been a long 2 1/2 months, but I am back working at the museum now. I thank everyone for all the flowers, cards and prayers that were sent to me. They made the stay at the hospital much brighter, and the cards were on my wall for me to see each day.

Thanks to the Park District for the new computer and I am in the midst of setting it up and getting it going. Thanks to Al for all your hard work. It will be great to be able to scan pictures and to finish the power point presentation program.

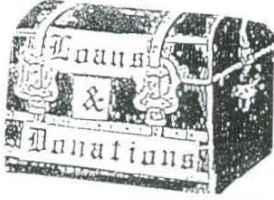
The museum is closed for the winter and I would like to have some volunteers for cleaning, dusting and vacuuming the rooms. Let me know what day would be good as I can also set up a weekend i.e. a Sat. or Sunday afternoon. If anyone has any ideas for a new exhibit, please let me, Patti or Marilyn know. We are always looking for something different !

Thanks to my wonderful workers, Patti, Marilyn, Beverly and Barbara for keeping everything working smoothly while I was gone. I have a wonderful group of volunteers!!

Linda Reading, Curator

TENTATIVE CALENDAR FOR THE COMING YEAR.

DECEMBER...Lollipop Lane
FEBRUARY....Auction & Pot Luck Dinner
APRIL...Tea Social
MAY ...Banquet and Election of Officers
JULY 4TH....."Pickles and Watermelon"
AUGUST....Annual Picnic



We would like to thank the following friends for their donations to the museum.

Eleanor Buerger for two rubber can openers
From Wheeling Trust and Savings Bank.

Palatine Historical Society for a copy of the
"Township of Palatine" soft cover book.

Skip Tubs for 1 milk can, 1 coin, 1 motorcycle
license tag and 1 dog tag.

Mrs. Cloise Weider for an Abstract of Title.

Gary Cohn for 1 "Little BoPeep" bottle

Dorothy Flentge for one classroom picture of
Old Wheeling School in 1926.



TRIVIA

How many pounds of turkey do Americans
Eat on Thanksgiving? 5 million, 25 million
535 million or 890 million?

What color are turkey eggs? White, pale blue
Pale tan or pink?

What percentage of American homes eat
Turkey on Thanksgiving? 50%, 65%, 90%
Or 35%?

Who proclaimed Thanksgiving a national
Holiday? President Lincoln, President
Washington, President Clinton or President
Grant?

ANSWERS

535 million/ pale tan/ 90%/ President Lincoln



Cook's
Kitchen

SPRITZ COOKIES

1 CUP OLEO	2 1/2 CUPS FLOUR
3 OZ. CREAM CHEESE	1 TSP. SALT
1 CUP SUGAR	1/4 TSP. CINNAMON
1 EGG YOLK	
1 TSP. VANILLA	

CREAM OLEO, CREAM CHEESE AND SUGAR. BEAT IN
EGG YOLK. ADD FLOUR, SALT AND CINNAMON. USE
COOKIE PRESS INTO UNGREASED COOKIE SHEET. BAKE
350° FOR ABOUT 10 MINUTES OR UNTIL LIGHTLY
BROWNED ON BOTTOM. MAKES 6 or 7 DOZEN.

CHRISTMAS WREATH CANDIES

32 LG. MARSHMALLOWS
7 T. OLEO
1/2 TSP. VANILLA
1 TSP. GREEN FOOD COLORING
6 CUPS CORN FLAKES
6 CINNAMON CANDIES

MELT MARSHMALLOWS AND OLEO IN LG. SAUCEPAN OVER
LOW HEAT. STIR IN FLOURINGS AND FOOD COLORING.
ADD CORN FLAKES. STIR WELL TO COAT. SHAPE BY
SPOONFULS INTO WREATHS ON WAXED PAPER WITH BUTTER-
ED HANDS. DECORATE WITH CINNAMON CANDIES.

TOFFEE BARS

1 CUP OLEO (SOFT)
1 CUP BROWN SUGAR (PACKED)
1 TSP. VANILLA
1 EGG
2 CUPS FLOUR
1/4 TSP. SALT
CHOCOLATE CHIPS
NUTS

CREAM OLEO AND BROWN SUGAR IN LARGE BOWL. ADD VAN-
ILLA AND EGG. BEAT WELL. SIFT FLOUR AND SALT. ADD
TO CREAMED MIXTURE SLOWLY, BLENDING THOROUGHLY.
SPREAD MIXTURE EVENLY IN GREASED 10 X 14 INCH BAKING
PAN. BAKE AT 350° OVEN FOR 20 - 25 MINUTES. REMOVE
FROM OVEN. SPREAD CHOCOLATE CHIPS OVER TOP. ALLOW
TO MELT. SPRINKLE WITH NUTS. COOL. CUT IN BARS.

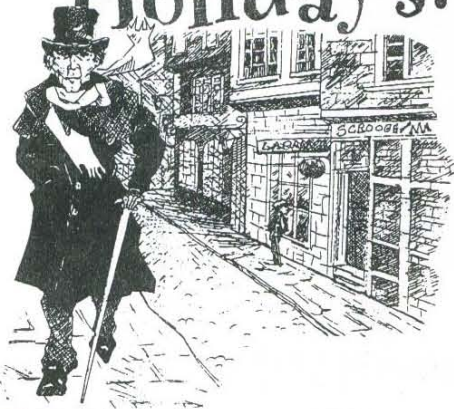
SNOWBALL COOKIES

1 LB. OLEO
1/2 CUP SUGAR
4 TSP. VANILLA
3 1/2 CUPS FLOUR
1/2 CUP CHOPPED NUTS
3/4 CUPS POWDER SUGAR

CREAM OLEO & SUGAR IN BOWL. ADD VANILLA. STIR
IN FLOUR, BLENDING WELL. STIR IN NUTS. MIX
WELL. SHAPE TEASPOONFULS OF DOUGH INTO BALLS.
BAKE AT 350° FOR 10 MINUTES. COOL. ROLL IN
POWDER SUGAR.



Happy Holidays!



NOVEMBER

SUN	MON	TUES	WED	THU	FRI	SAT
	1	2	3	4	5	6
7	8	9	10	11	12	13
14	15	16	17	18	19	20
21	22	23	24	25	26	27
28	29	30				

DECEMBER

SUN	MON	TUES	WED	THU	FRI	SAT
LOLLIPOP LANE!						
5	6	7	8	9	10	11
12	13	14	15	16	17	18
19	20	21	22	23	24	25
26	27	28	29	30	31	



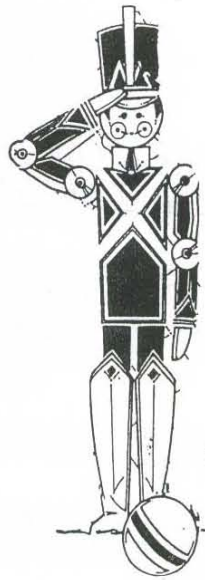
JOE LEWNARD/DAILY HERALD
Santa and Mrs. Claus ride a sleigh float down Dundee Road

COMING SOON!

LOLLIPOP LANE
December 4th thru 12th
Chamber Park
251 N. Wolf Road
Mon-Fri...6:30-8:00 p.m.
Sunday...2:00 -5:00 p.m.

Members needed
for setting up which will
start Nov.29-Dec3rd
Members will be called
to bake cookies
Members needed!!!

Let us know at the November Meeting if you can help!



"The object of this Society shall be the discovery, preservation and dissemination of knowledge about the community of Wheeling"

-W.H.S. Constitution -



*WHEELING HISTORICAL SOCIETY
PRESENTS*

LOLLIPOP LANE

SATURDAY, DECEMBER 4TH
THROUGH
SUNDAY, DECEMBER 12TH

AT

*CHAMBER PARK
251 NORTH WOLF ROAD
WHEELING, ILLINOIS*



MONDAY THROUGH FRIDAY 6:30 P.M. TIL 8:30 P.M.
SATURDAY, SUNDAY 2:00 P.M. TIL 5:00 P.M.

MR. AND MRS. SANTA CLAUS ARRIVING IN
WHEELING ON
SATURDAY, DECEMBER 4TH
AT 1:30 P.M.

THE PARADE WILL START ON DUNDEE AND 83 AND PROCEED TO CHAMBER PARK

- VISIT WITH MR AND MRS CLAUS AT NO CHARGE
- PICTURE TAKEN WITH MR AND MRS SANTA COURTESY OF BILL STASEK CHEVROLET
- SUPRISES FOR THE CHILDREN
- COOKIES TO PURCHASE (WHILE THEY LAST) DONATION TO THE SOCIETY





Fireside and Book

Bertha Harzung

When the goldenrod is drying,
And the sumac leaves turn red,
And the milkweeds in the cornfield
Fold seed babes in silken bed;
When the frost nips toes and fingers,
And chill winds pierce every nook,
Then I want no better company
Than the fireside and a book.

When the geese are honking southward,
And wind dirges hint of snow,
And crisp leaves drift in the hollows
Or in swirls dance to and fro;
When October spreads frost crystals
Everywhere the eye can look,
Then I crave no better company
Than the fireside and a book.



Old Fashioned Christmas

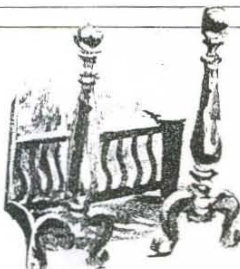
Laura Hope Wood

Bring the tallest tree from the hills,
Trim the lights that will shine afar,
Sprinkle all over with tinsel and snow . . .
On the very top place a star.

Hang up the brightest of holly wreaths
Tied with ribbon scarlet and bright;
Light every window with candles that gleam,
Sending their glow through the winter night.

Wrap every present in red and in gold,
With silver stars sprinkled o'er;
Make the day bright with Christmas cheer . . .
Have mistletoe over the door.

Make it an old-fashioned Christmas . . .
May every heart feel the glow
That comes with the sound of sleigh bells
Ringing out over drifting snow.



In Sympathy

We would like to express our condolences to
Barb LaHay on the passing of her brother.
Our thoughts and prayers are with you.

ONLY IN AMERICA

Ever wonder why the sun lightens our hair,
But darkens our skin?

Why women can't put on mascara with their
Mouth closed?

Why don't you ever see the headline "Psychic
Wins lottery"?

Why is "abbreviated" such a long word?

Why is it that to stop Windows 98, you have
To click on "Start"?

Why is it that doctors call what they do "practice"?

Why is lemon juice made with artificial flavor,
And dishwashing liquid made with real lemons?

NOVEMBER

November is when you can't find the holiday
Cards you bought on sale last January.

DECEMBER

Learn from yesterday, live for today,
Dream for tomorrow.

REMINDER

Remove all hoses from outside fixtures and
Insulate the fixtures from the cold to prevent
Water leaks.

December- Remember to recycle your
christmas tree and used wrapping paper.



This month with Lollipop Lane almost here, in the above picture we are looking in the past to 1990 and there on Santa's lap is Devin Stieber the son of Gus and Jill Stieber and the grandson of Shirley Koeppen, telling Santa what he would like for Christmas.

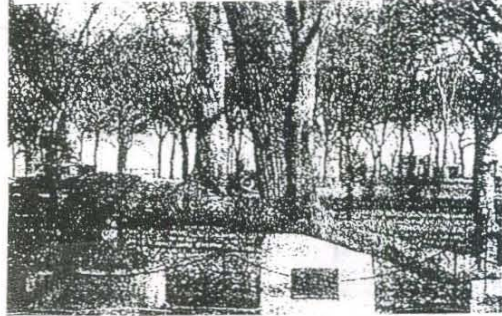
Devin has had asthma all his life and as a teenager, he volunteered at Children's Memorial Hospital. He has since graduated from Vernon Hills High School and plans to attend Southern Illinois University and major in political science.

Presently, he is a young man who had the opportunity to help others while gaining experience, when he traveled to Washington, D.C. to testify on Capital Hill as part of a panel that spoke in favor of a proposed asthma related bill on behalf of the Asthma Awareness Day sponsored by the Allergy and Asthma Network. This bill did pass. We CONGRATULATE this young man on his endeavors. He has come a long way since telling Santa what he wanted for Christmas.

VHHS senior testifies in Springfield and on Capitol Hill



A BIT OF HISTORY



TRAIL MARKER TREES OF ILLINOIS

Waterway played a critical role in the development of the landscape. Man followed the animal trails that regularly led to water, so necessary to the survival of both. Settlements arose along these trails, and pathways served as links between the early settlers.

The Pottawatomi, Indians were considered responsible for marking the pathways through the prairie and woodlands. Where the trail was difficult to follow, they would bend a sapling and fasten its top leader or main stem to the ground to serve as a guide. As the sapling grew, it formed a peculiar horizontal trunk that directed the traveler to the next village or point of interest. As the tree matured, its tip again reached upward toward the sunlight. These distinctive trees were called "trail marker trees" or "thong trees;" for the leather tie that was used to secure them to the ground. Oak trees were regularly employed to direct travelers to villages, while elm trees were identified with pathways toward water or marshes that contained plentiful wild life.

If you haven't noticed, the Wheeling Garden Club, with permission of the park, has planted an Oak tree in Chamber Park. A marker has been placed to explain its origin.
